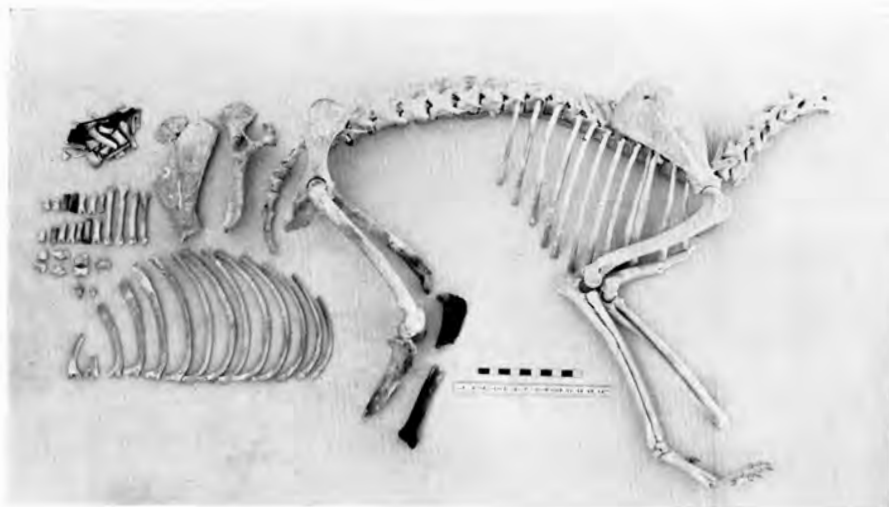


A. Area D: Square 1, looking east. Wall D. 1:4 running from west to east with gateway in the foreground. Wall D. 1:3 is to the left and behind it are the remains of the vaulted room



B. Area D: the stairway in Square 2 with Wall D. 2:2 on the right



A. Headless skeleton of a large canine found under Locus 24 in Area B. 1



B. A variety of fragments from colored glass vessels and of glass bracelets



Painted Arab vessels from the cistern of Area C